



***ELITE 150-INT***  
***ELITE 200-INT***  
***ELITE 220-INT***

**Instruction Manual**



HONYA CO., LTD  
[www.reefoctopus.com](http://www.reefoctopus.com)



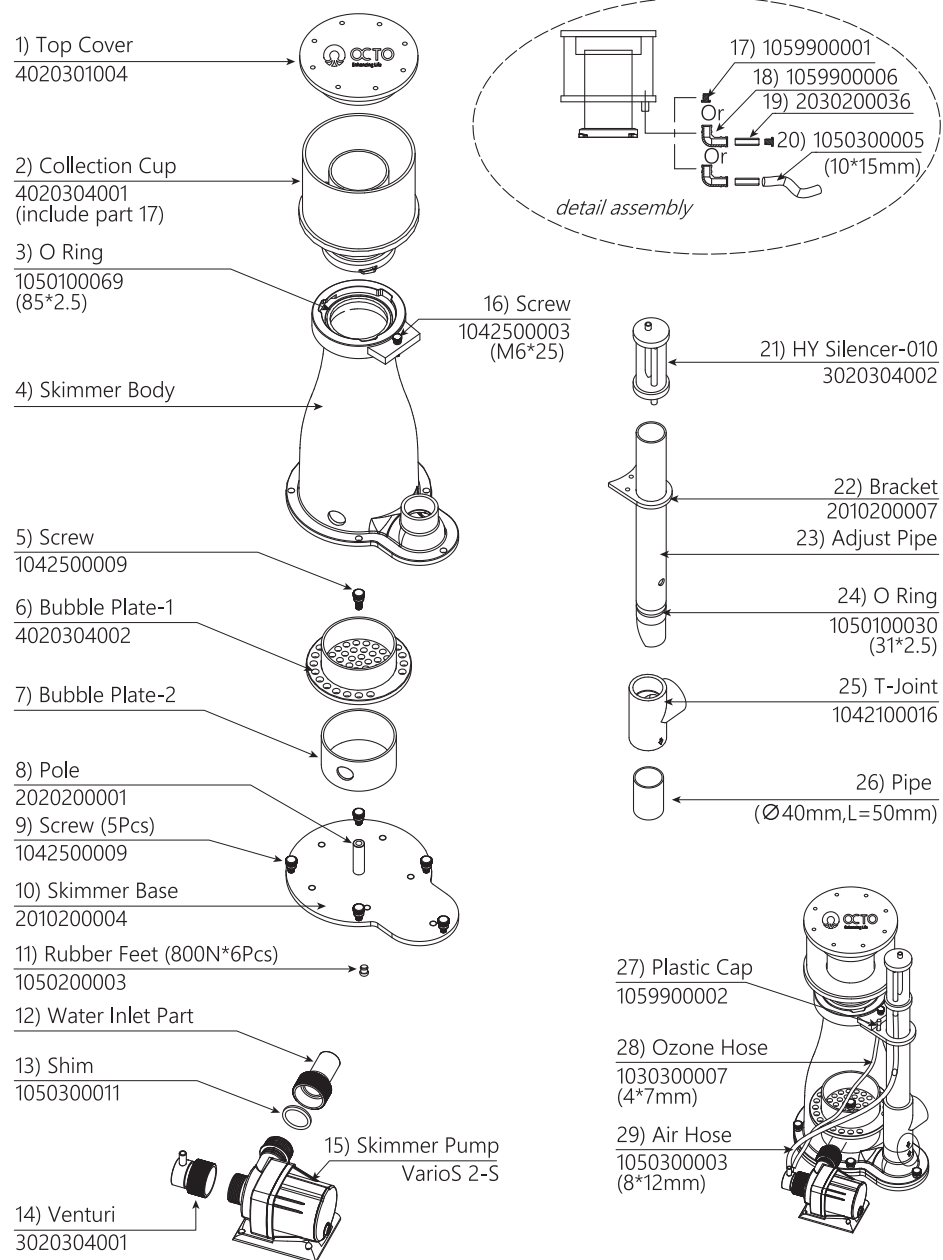
Dear Customer

Thank you for choosing OCTO, a quality product manufactured by HONYA CO., LTD. In order for you to safely use our product for maximum results, please read the instruction prior to use. We would strongly suggest that you retain this Instruction for future reference.

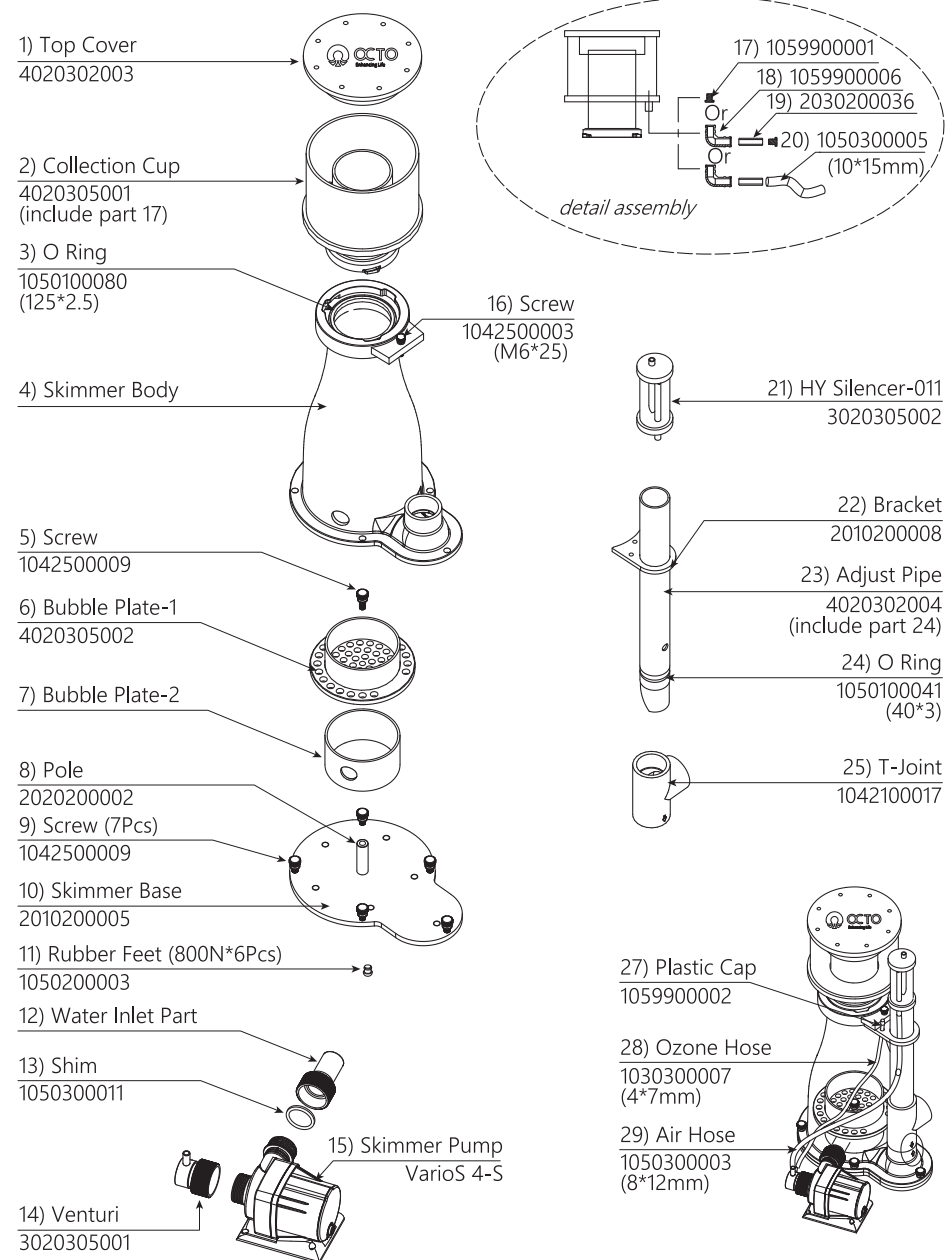
## Product specification

Item No.	Product	Wet/ Dry	Pump Power	Cup Diameter		Neck Diameter		Footprint				Height		Output Size		Tank Volume	
				mm	inch	mm	inch	mm		inch		mm	inch			L	US Gal
120304	Elite 150-INT	Wet	25	150	5.9	80	3.2	290	265	11.4	10.4	525	20.7	Φ 40 mm (1-1/4")		800	211
120305	Elite 200-INT	Wet	40	200	7.9	120	4.7	380	285	15.0	11.2	590	23.2	Φ 50 mm (1-1/2")		1500	396
120306	Elite 220-INT	Wet	70	220	8.7	120	4.7	420	310	16.5	12.2	630	24.8	Φ 50 mm (1-1/2")		2000	528

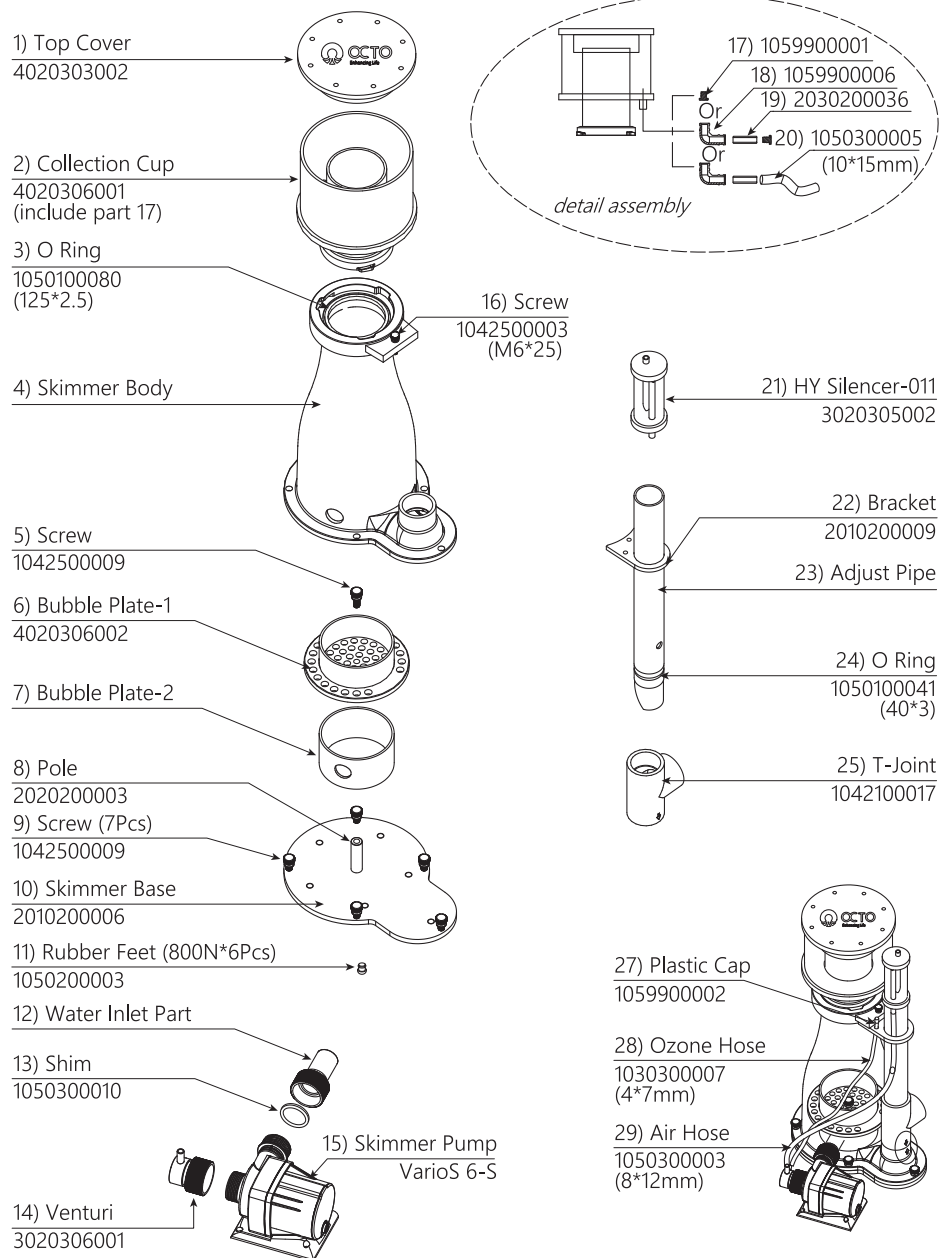
## Explosion Chart for Elite 150-INT



## Explosion Chart for Elite 200-INT



## Explosion Chart for Elite 220-INT



## Installation

- Remove the skimmer body and all the assembly parts. Please refer to the checklist.
- Install the product as shown.
- Put the skimmer in sump, power on. Turning the adjust pipe to adjust the water level.
- Recommended sump water level:  
At 180-200mm(7-7.9") for Elite 150-INT (VarioS 2-S)  
At 200-220mm(7.9-8.7") for Elite 200-INT (VarioS 4-S)  
At 200-220mm(7.9-8.7") for Elite 220-INT (VarioS 6-S)

Watch our unboxing video <https://youtu.be/ilaeWluzoII> or scan



## Maintenance

- Collection Cup: Collection Cup should be cleaned at least once every 7-10 days, depending on the organic waste collected.
- Skimmer body: It is recommended that you clean the Skimmer Body once every 3-6 months. Clean and rinse off with fresh water only.
- Silencer: It is recommended to clean the silencer once every 2-3 months to prevent blockage.
- Pump: It is recommended to clean the Pump once every 3-6 months. Check and Clean the Impeller and pump chamber. If necessary, soak the Pump and Impeller in White Vinegar to dissolve stubborn calcium deposits.

## Safety Tips

- Always unplug the pump before maintenance.
- Never run the pump dry.
- Do not touch the Socket with wet hands.
- Do not clean the Skimmer with any cleaning agents.

## Warranty

Please refer to the below URL:  
<https://reefoctopus.com/services/warranty/>

HONYA CO., LTD is committed to continuous product development, we hereby reserve the right to revise the product specifications or designs without prior notice. For any further enquiry/assistance and latest product updates, Please Visit at [www.reefoctopus.com](http://www.reefoctopus.com).